

# Planning Committee

10.00am, Thursday 02 October 2014

## Corporate Performance Framework - Performance for January to June 2014

Item number	7.3
Report number	
Executive/Routine	Executive
Wards All	

### Executive summary

---

This report provides an update on Council performance against Planning strategic outcomes. The report is presented in line with the update of Council's Performance Framework approved by Corporate Policy and Strategy Committee in December 2013, and contains analysis of performance covering the period from January to June 2014.

### Links

---

[Coalition pledges](#)  
[Council outcomes CO14](#)  
[Single Outcome Agreement](#)

## Name of report

### Recommendations

---

- 1.1 It is recommended that the Planning Committee notes the performance for the period from January to June 2014.

### Background

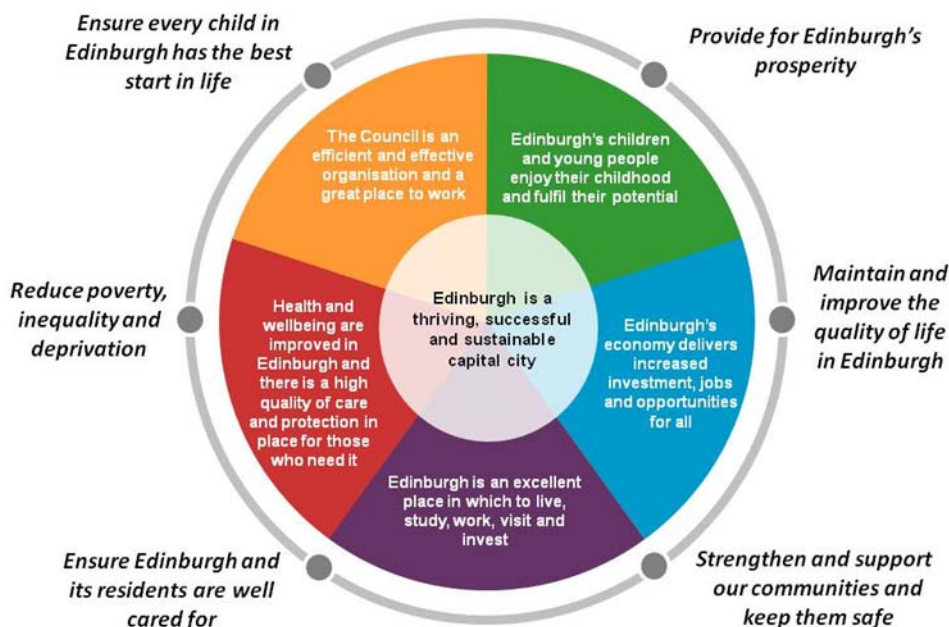
---

- 2.1 The '[Review of political arrangements](#)' report to the City of Edinburgh Council on 24 October 2013 approved a number of revisions to committee business. It was agreed by Council that performance monitoring, review and scrutiny will be led by the Executive Committees on a bi-annual basis, with oversight by the Corporate Policy and Strategy Committee.
- 2.2 This report provides an update on performance for planning for the period January to June 2014.

### Main report

---

- 3.1 The Council's Performance Framework is set out in the diagram below and takes account of the Council's vision, five strategic outcomes and the six key Capital Coalition pledges.



- 3.2 This report provides a performance update under the Council outcome shown above: Edinburgh is an excellent place to live, study, work, visit and invest.
- 3.3 The Corporate Dashboard in [Appendix 1](#) provides an overview of performance in meeting these Council outcomes from January to June 2014. Further detailed information by indicator is provided in [Appendix 2](#).

---

## Measures of success

---

- 4.1 This report provides detail on Council performance against delivery of planning outcomes for the period from January to June 2014.

---

## Financial impact

---

- 5.1 The financial impact is set out within the Council's Performance Framework.

---

## Risk, policy, compliance and governance impact

---

- 6.1 Risk, policy, compliance and governance impact is integrated within the Council's Performance Framework.

---

## Equalities impact

---

- 7.1 Reducing poverty, inequality and deprivation is integrated within the Council's Performance Framework.

---

## Sustainability impact

---

- 8.1 The sustainability impact is set out within the Council's Performance Framework.

---

## Consultation and engagement

---

- 9.1 Priorities and outcomes have been developed in consultation with stakeholders.

---

## Background reading / external references

---

The [Council's Performance Framework](#) approved by Corporate Policy and Strategy Committee on 3 December 2013.

### John Bury

Acting Director of Services for Communities

Contact: Jo McStay, Business Intelligence Manager

E-mail: [jo.mcstay@edinburgh.gov.uk](mailto:jo.mcstay@edinburgh.gov.uk) | Tel: 0131 529 7950

---

## Links

---

**Coalition pledges**

**Council outcomes** CO14

**Single Outcome  
Agreement**

**Appendices**

[Appendix 1: Corporate Dashboard](#)




[Appendix 2: Corporate Dashboard Indicator Detail](#)

# Appendix 1: Dashboard January – June 2014

Edinburgh is an excellent place in which to live, study, work, visit and invest

Directors notes:




The Planning Service is progressing with the preparation of the new Local Development Plan to guide place making activity as development proposals are submitted. The growth in the number of planning applications and building warrants is evidence of an upturn in development activity and an opportunity to use new investment in the City's buildings and spaces to deliver improved quality. In parallel, the consolidation of planning guidance for developers has seen new design guidance approved and draft street design guidance prepared during the past year.

	Jan-Mar 14	Apr-Jun 14	Target
<u>% of non-householder planning applications dealt with within 2 months</u>	68.6%	72.1% 	80%
<u>% of householder planning applications dealt with within 2 months</u>	89.2%	88.5% 	90%
<u>% of major applications decisions within target</u>	50%	80% 	80%




# Appendix 2: Corporate Dashboard Indicator Detail

## January - June 2014

### 3. Edinburgh is an excellent place to live, study, work, visit and invest

Indicator	Jan-Mar 14	Apr-Jun 14	Target	Status	Latest Note
% of non-householder planning applications dealt with within 2 months	68.6%	72.1%	80%		The target of 80% has not been met. The figures have improved since the last quarter. There has been an increase of 15.2% in applications received this quarter compared to last quarter but the number of staff dealing with applications has reduced. Additional temporary resources have been approved but recruitment takes time due to the temporary nature of the posts, notice periods for applicants and lack of interest from suitably qualified applicants for a temporary post. 60% of the posts were filled by end August.
% of householder planning applications dealt with within 2 months	89.2%	88.5%	90%		The target has been missed again and there is a slight reduction from last quarter due to staff resources (see above). However, the performance task force team has been set up and will be fully staffed by early August, dealing with householder and minor applications. This should take the burden off the two existing teams and should result in better performance figures.
% of major applications decisions within target	50%	80%	80%		Target met.

#### Key

	PI is below target and tolerances.		PI is below target but within tolerances.		On target.
--	------------------------------------	---	---	---	------------